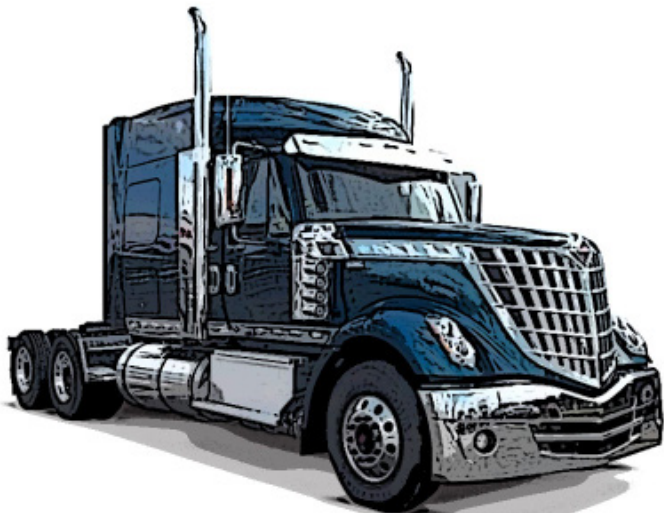


BRAKEWORKS **INC.**

P R E M I U M B R A K E C O M P O N E N T S

PREMIUM BRAKE COMPONENTS FOR COMMERCIAL VEHICLES



**8TH EDITION
WINTER 2024**

BRAKEWORKS REMANUFACTURING PRINCIPLES

Remanufacturing is the process of returning used calipers to original or better performance specifications, as well as giving the caliper an OEM quality warranty.

The remanufacturing process consists of reusing the principle components. Each caliper is dismantled by hand and each part is inspected for wear and deterioration. After the parts are cleaned and examined, they are then separated by what can be reused and what cannot, or will not, be reused. Any parts that are broken, missing, damaged, or otherwise unsafe to reuse, will be replaced by a new OEM quality part. All used parts will be machined or refinished to restore to “like-new” working condition.

The remanufacturing process, similar to the recycling process, is much more environmentally friendly. This process in no way decreases the reliability or safety of the finished product. The main body is inspected for cracks, breakages, distortions, etc. After the inspection the body is degreased and cleaned in a hot pressure detergent bath. The caliper is then shot blasted to smooth out any imperfections.

The internals of the caliper are thoroughly inspected. Bearings, rubber parts and the majority of smaller working parts are replaced in each remanufactured caliper. Once the caliper is re-assembled the product is bench tested to ensure correct functionality and alignment. The final part of the remanufacturing process is to date stamp each caliper to ensure complete traceability.

In September 2016, the top six international remanufacturing associations met in Frankfurt, Germany, to determine the world-wide definition for remanufacturing. Below you will find the definitions created by these associations, and apply to BrakeWorks remanufactured calipers.

Remanufacturing Process: Remanufacturing is a standardized industrial process* by which cores are returned to same-as-new, or better, condition and performance. The process is in line with specific technical specifications, including engineering, quality and testing standards. The process yields fully warranted products.

*An industrial process is an established process, which is fully documented, and capable to fulfill the requirements established by the remanufacturer.

Core: A core is a previously sold, worn or non-functional product or part, intended for the remanufacturing process. During reverse logistics, a core is protected, handled and identified for remanufacturing to avoid damage and to preserve its value. A core is not waste or scrap and is not intended to be reused before remanufacturing.

Remanufactured Part: A remanufactured part fulfills a function which is at least equivalent compared to the original part. It is restored from an existing part (CORE), using standardized industrial processes in line with specific technical specifications. A remanufactured part is given the same warranty as a new part and it clearly identifies the part as a remanufactured part and states the remanufacturer.

BENDIX & KNORR-BREMSE ADB22X



*Photo of caliper above shows long pin on the left side, OEM casting #Z035248. Reverse caliper will have the long pin on the right side, OEM casting #Z035247. Generally the long pin on the left side will be a left side caliper. **Trailer calipers excepted. Due to 0° chamber mount, trailer calipers are interchangeable.**

REMANUFACTURED CALIPERS



1002 Left Side

Bendix #K019181X
Lite #K128829SC

Trailer

0° Cassette Caliper only
Includes 10194 guide pin kit

Image shown

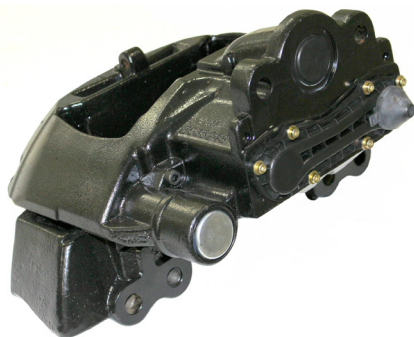
1001 Right Side

Bendix #K019180X
Lite #K128828SC

Trailer

0° Cassette Caliper only
Includes 10194 guide pin kit

Reverse of image shown



1004 C88 Axle - Right Side P89 Axle - Left Side

BWR 012342
Bendix #K012342
SAF #03080005901Z
0° Trailer Caliper and Carrier

Image shown

1003 C88 Axle - Left Side P89 Axle - Right Side

BWR012341
Bendix #K012341
SAF #03080006001Z
0° Trailer Caliper and Carrier

Reverse of image shown



1005 Left Side

BWR 113888X
Bendix # 802984
Hendrickson #S-29152-14

0° Trailer Caliper and Carrier

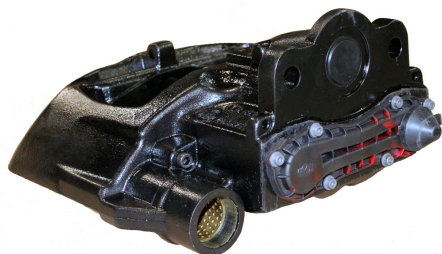
Image shown

1006 Right Side

BWR 113887X
Bendix #802985
Hendrickson #S-29152-15

0° Trailer Caliper and Carrier

Reverse of image shown



1007 Left Side

BWR5901Z
SAF #03080005901Z
Casting #Z045781

Knorr SK7, Trailer Caliper only
Includes 10194 guide pin kit

Image shown

1008 Right Side

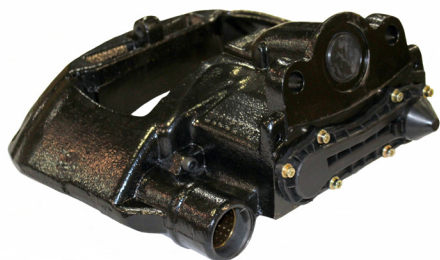
BWR6001Z
SAF #03080006001
Casting #Z045780

Knorr SK7, Trailer Caliper only
Includes 10194 guide pin kit

Reverse of image shown

BENDIX COMPONENTS

REMANUFACTURED CALIPERS



1014 Left Side

Bendix #K081259X,
K019175

12° Power Unit Cassette Caliper only

Includes 10194 guide pin kit

Image shown

1013 Right Side

Bendix #K081258X,
K019174

12° Power Unit Cassette Caliper only

Includes 10194 guide pin kit

Reverse of image shown



1018 Left Side

BWR 109958X
Bendix #K081257

Power Unit Caliper and Carrier

Applications: Freightliner

Image shown

1017 Right Side

BWR 109957X
Bendix #K081256

Power Unit Caliper and Carrier

Applications: Freightliner

Reverse of image shown



1020 Left Side

BWR 109962X
Bendix #K081143

Power Unit Caliper and Carrier

Applications: Mack, Kenworth, Navistar, Peterbilt, Volvo

Image shown

1019 Right Side

BWR 109961X
Bendix #K081142

Power Unit Caliper and Carrier

Applications: Mack, Kenworth, Navistar, Peterbilt, Volvo

Reverse of image shown



1022 Left Side

BWR 165795

Power Unit Caliper and Carrier

Applications:

Image shown

1021 Right Side

BWR 165794

Power Unit Caliper and Carrier

Applications:

Reverse of image shown

BENDIX COMPONENTS

CARRIERS



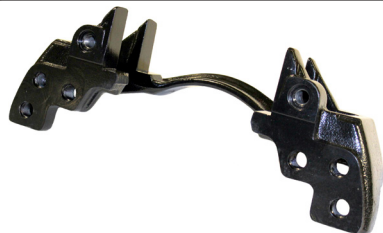
TK2201-01

Bendix #K051853

Truck Carrier

Hardware: M20x2.5x60mm 10.9, 3mm flats

Applications: Mack, Kenworth, Navistar, Peterbilt, Volvo



TK2201-01MCL

Left Side

Bendix #K051853

Bus Carrier

Applications: J4500MCI

2015-Present Drive Axel

Image shown

TK2201-01MCR

Right Side

Bendix #K051853

Bus Carrier

Applications: J4500MCI

2015-Present Drive Axel

Reverse of image shown



TK2202-01

Bendix #K056559

Truck Carrier

Hardware: M16x2.0x110mm 12.9, no washer

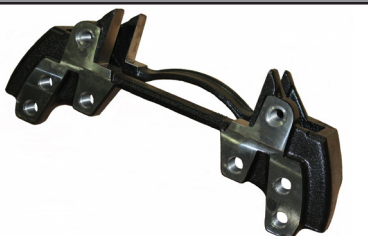
Applications: Freightliner Carrier



TK2208-01

Z019050

Trailer Carrier (SAF) casting #Z019050



TK2209-01

Bendix #K043288

Trailer Carrier (Hendrickson) casting #Z014271

Hardware: M20x2.5x60mm 10.9, 3mm flats

BENDIX COMPONENTS

KITS



10103

Bendix #K092079

Tappet Kit

Bendix ADB22X

KITS



10194

Bendix #803114

Guide Pin Kit
Bendix ADB22X



KITADB22X

Preventative Maintenance Kit
Bendix ADB22X

Without bronze bush



10239

Bendix #Z001548, 802455

Caliper Calibration Loaf
Bendix ADB22X
10 Pack



10380

10240

10380 & 10240

Caliper Repair Kit - Metal Tap
Bendix ADB22X
10 Pack



S19

Cotter Pin
Bendix ADB22X
25 Pack

BRAKE PADS



BW1369ZNRS

Bendix #K070796
Lite K129276
210m

Truck and Trailer NRS Pads
Includes hardware kit

BENDIX COMPONENTS

BRAKE PADS



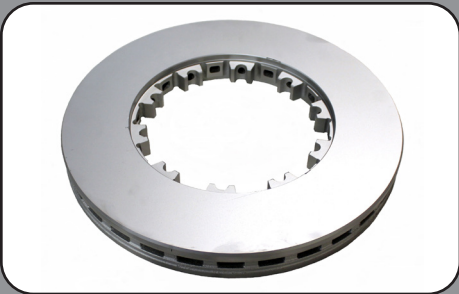
BW29318Z

WVA #29318
SAF ST7 #0305700600
215mm, Notched bottom

Truck and Trailer NRS Pads

Includes hardware kit

ROTORS



57701

Bendix #802569

Splined Rotor

Includes all hardware

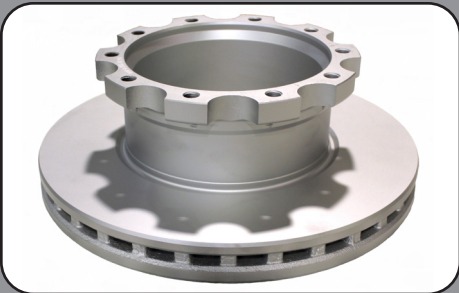


57702

Bendix #802081, K038573, K00758

138 mm Rotor
U-Shaped

Includes all hardware

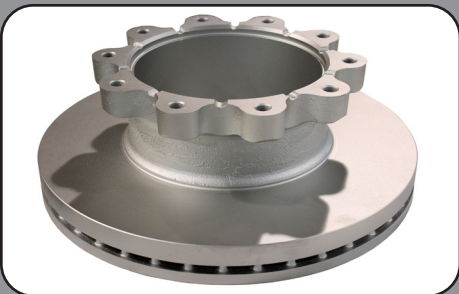


57703

Bendix #802082, K038574
SAF #51830049 P89 New

150 mm Rotor
U-Shaped

Includes all hardware



57704

56642G

Meritor #23-123642-002
Gunite #55060P
MCI #15-03-1012
143 mm Rotor, 267 mm Bolt Circle Diameter

U-Shaped
Includes all hardware

BENDIX COMPONENTS

ROTORS



57705

Conmet #10020682, 10020109 w/o hardware
Meritor #M44DH20682
Dura #76620

160 mm Rotor, 286 mm Bolt Circle Diameter
U-Shaped - Freightliner
Includes all hardware

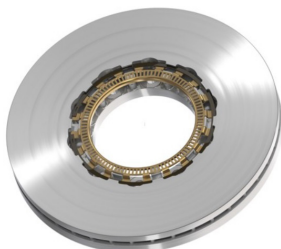


57711

76626G

SAF #51830036, 201920000001
P89/P89+
76626G

Includes all hardware



57732

Alternate #76801G
Conmet #10016195, 10018609, 10083615, 10085621
S-36661-1

Includes all hardware

KITS



BTKW11001

1/16

Bendix/Wabco

Bellow Seal Gasket
Chamber to Casting

BRAKE CHAMBERS



U041960

20/24

Bendix #K041960

Spring Brake Chamber, 2.5" Stroke



U132352

18/24

Bendix #K043329, K132352

Spring Brake Chamber, 2.25" Stroke



U28022

18

Bendix #K028022

Service Chamber, 2.5" Stroke

REMANUFACTURED CALIPERS



3001 Left Side

Wabco #40175090

PAN17
Caliper only

Image shown

3002 Right Side

Wabco #40175091

PAN17
Caliper only

Reverse of image shown



3005 Left Side

Wabco #40195027

PAN19
Caliper only

Image shown

3006 Right Side

Wabco #40195028

PAN19
Caliper only

Reverse of image shown



3019 Left Side

Wabco #402250500,
40225011

PAN22
Caliper and Carrier

Image shown

3020 Right Side

Wabco #402250510,
4225012

PAN22
Caliper and Carrier

Reverse of image shown



3021 Left Side

Wabco #402250800
Hendrickson #S-33648-2

PAN22
**Caliper and Hendrickson
Carrier**

Image shown

3022 Right Side

Wabco #402250810
Hendrickson #S33648-3

PAN22
**Caliper and Hendrickson
Carrier**

Reverse of image shown



3023 Left Side

Wabco #403220650
Freightliner #

MAXXUS
Caliper only

Image shown

3024 Right Side

Wabco #403320660
Freightliner #

MAXXUS
Caliper only

Reverse of image shown

REMANUFACTURED CALIPERS



3025 Left Side

Wabco #402220070
Hendrickson #S-35973L

MAXX 22T
Caliper only

Image shown

3026 Right Side

Wabco #402220080
Hendrickson #S-35973-R

MAXX 22T
Caliper only

Reverse of image shown

CARRIERS



30186 Left Side

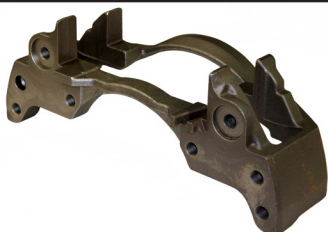
PAN17
Casting #14 174 176

Image shown

30187 Right Side

PAN17
Casting #14 174 176

Reverse of image shown



30189 Right Side

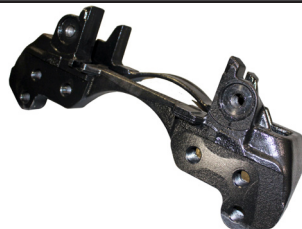
PAN19

Image shown

30188 Left Side

PAN19

Reverse of image shown



TK2209-02 Left Side

PAN22
Casting #L3296409097428
Hendrickson

Image shown

TK2209-03 Right Side

PAN22
Casting #L3296409097428
Hendrickson

Reverse of image shown



30190 Left Side

PAN22
IMT/Reyco #14 174 188

Image shown

30191 Right Side

PAN22
IMT/Reyco #14 174 168

Reverse of image shown



Left Side

MAXX22T
Hendrickson

Image shown

Right Side


MAXX22T
Hendrickson


Reverse of image shown


CARRIER


	<p>TBA Left Side MAXXUS Casting #540 909 747 Freightliner <i>Image shown</i></p>	<p>TBA Right Side MAXXUS Freightliner <i>Reverse of image shown</i></p>
---	---	---

CALIPER PUSH PLATES

	<p>30154 Right Side BTW30042 640 225 926 2 Wabco PAN22 <i>Image shown</i></p>	<p>30155 Left Side BTW30043 640 225 926 2 Wabco PAN22 <i>Reverse of image shown</i></p>
---	--	--

	<p>30156 Right Side BTW30044 Wabco PAN19 <i>Image shown</i></p>	<p>30157 Left Side BTW30045 Wabco PAN19 <i>Reverse of image shown</i></p>
--	---	---

	<p>30158 Right Side BTW30046 Wabco PAN17 <i>Image shown</i></p>	<p>30159 Left Side BTW30047 Wabco PAN17 <i>Reverse of image shown</i></p>
---	---	---

	<p>30160 Right Side BTW30048 Wabco PAN17 <i>Image shown</i></p>	<p>30161 Left Side BTW30049 Wabco PAN17 <i>Reverse of image shown</i></p>
---	---	---

	<p>30211 Right Side 640 322 935 2 Wabco MAXX22T/MAXXUS <i>Image shown</i></p>	<p>30212 Left Side 640 322 935 2 Wabco MAXX22T/MAXXUS <i>Reverse of image shown</i></p>
---	---	---

WABCO COMPONENTS

KITS



30123

Wabco #12 999 678VT
IMT #640 225 921 2
Hendrickson #S-32676-4

Guide Pin Kit
Wabco PAN19/PAN22



30142

Wabco #12 999 699VT

Guide Pin Kit
Wabco PAN17



30202

640 322 927 2

Caliper Repair Kit
Wabco MAXXUS



30257

IMT #640 222 928 2

Caliper Repair Kit
Wabco MAXX22T/MAXXUS



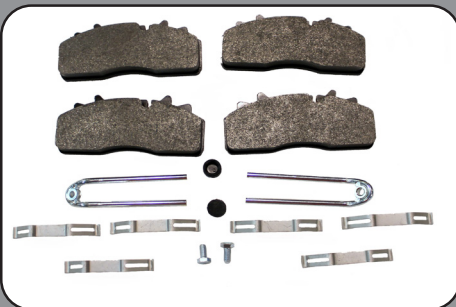
BTKW11001

1/16

Bellow Seal Gasket
Chamber to Casting

WABCO COMPONENTS

BRAKE PADS



BW1438ZNRS

Wabco PAN19

Truck and Trailer NRS Pads

Includes hardware kit



BW1518ZNRS

Wabco PAN17

Truck and Trailer NRS Pads

Includes hardware kit

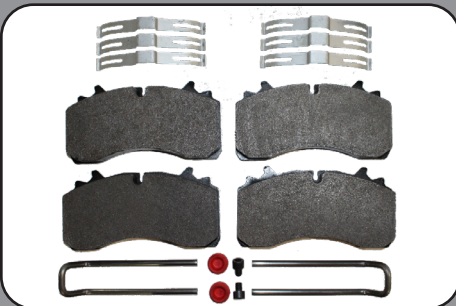


BW1777ZNRS

Hendrickson #S-32767-1

Wabco PAN22
Truck and Trailer NRS Pads
Retaining Bar 3mm longer than OEM

Includes hardware kit



BW2061ZNRS

Wabco #6403229342

Wabco MAXXUS/Maxx 22T

Truck and Trailer NRS Pads, 29.5mm
DMR 30205 KIT

Includes hardware kit

ROTORS



57706

Atlernate #75180G
Wabco #CT-826

IMT #70005
Hendrickson #S-33391

Wabco PAN17
8 Bolt Hole
U Shaped Rotor

Includes all hardware

WABCO COMPONENTS

ROTORS

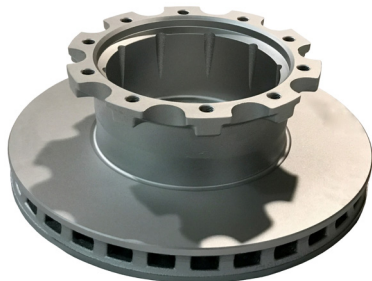


57707

Atlernate #71601G
Wabco #CT-832
Hendrickson #S-33389-1

Meritor #M44D71601
IMT #7006

Wabco PAN19
10 Bolt Hole
U-Shaped Rotor
Includes all hardware



57708

Atlernate #76613G
Wabco #CT807

IMT #70007

Wabco PAN22
10 Bolt Hole
U-Shaped Rotor

Includes all hardware



57709

Alternate #76471G
Hendrickson #S-34471, S-38765

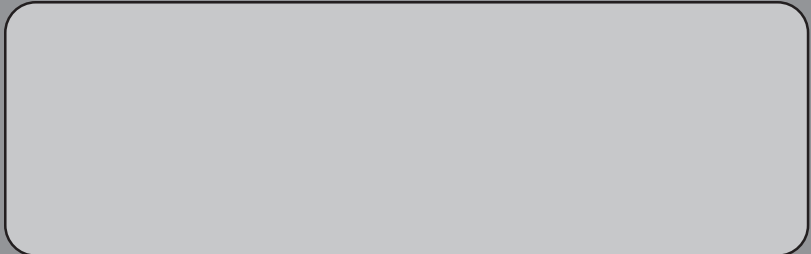
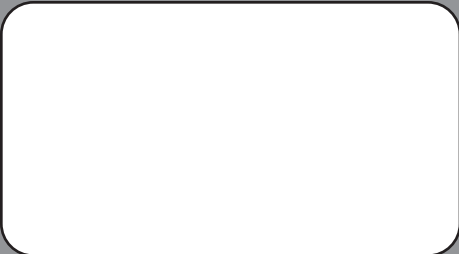
WEBB #55035PK
640 222 929 2

Wabco Maxx 22T
10 Bolt Hole
U-Shaped Rotor

Includes all hardware

WABCO COMPONENTS

TOOLS



REMANUFACTURED CALIPERS



K021990

Street Side

Nova #N8893321R

SB7 Radial
Caliper only

Image shown

K021989

Curb Side

Nova #N8893330R

SB7 Radial
Caliper only

Reverse of image shown



K021992

Street Side

Nova #N8893341R

SN7 Axial
Caliper only

Image shown

K021991

Curb Side

Nova #N8893344R

SN7 Axial
Caliper only

Reverse of image shown



N8900425

Street Side Front

New Flyer #6447271

Curb Side Rear

New Flyer #6447272

SN7 Axial

Image shown

N8900426

Curb Side Front

New Flyer #6447269

Street Side Rear

New Flyer #6447270

SN7 Axial

Reverse of image shown



N8900765

Street Side

K002964

SB7 Radial

Image shown

N8900769

Curb Side

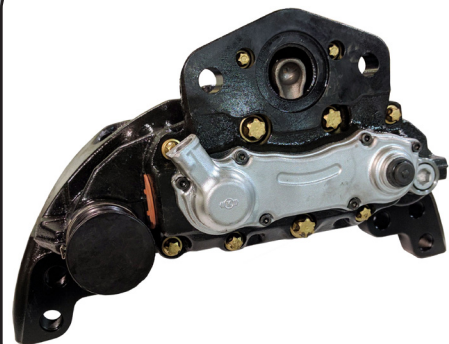
K002965

SB7 Radial

Reverse of image shown

KNORR COMPONENTS - COACH + TRANSIT

REMANUFACTURED CALIPERS



SB7974RC

Right Side

Casting #K002307

SB7 Transit

Image shown

SB7964RC

Left Side

Casting #K002306

SB7 Transit

Reverse of image shown



SN7206RC

Right Side

Casting #202164

SN7 Transit

Image shown

SN7216RC

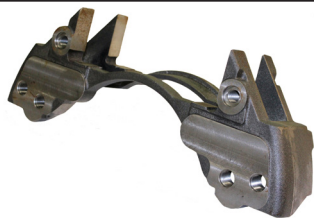
Left Side

Casting #202163

SN7 Transit

Reverse of image shown

KNORR COMPONENTS CARRIERS



10254

SN7 Axial Carrier

Used on SN7206RC, SN7216RC



10255

M18x2.5

SB7 Radial Carrier



TK2202-03

DMR #10332

SN7 Axial Carrier

CALIPER SENSOR COVER



10160

Caliper Sensor Cover (3 Socket - 3 Cable) (Man)
Knorr-Bremse SB/SN

Coach/Transit



10163

Caliper Sensor Cover (3 Socket - 3 Cable)
SN7

Coach/Transit

KITS



KITSB7

Preventative Maintenance Kit
Knorr-Bremse SB7 Radial

Coach/Transit

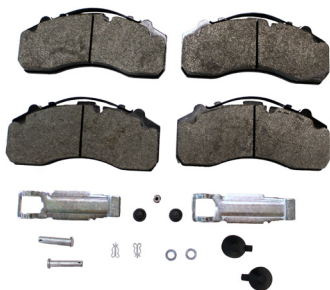


KITSN7

Preventative Maintenance Kit
Knorr-Bremse SN7 Axial

Coach/Transit

BRAKE PADS



BW1203ZNRS

Knorr SB7, SN7

Coach/Transit NRS Pads

Includes hardware kit

ROTORS

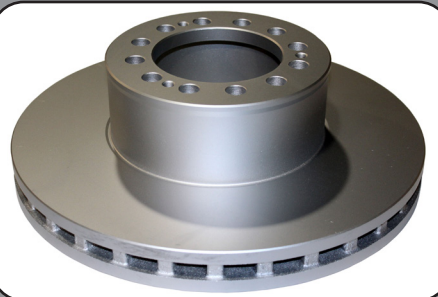


57713

Alternate #76612G
Bendix #K021958

Knorr #II371910061
Nova #N8884457

131 mm Rotor
U-Shaped



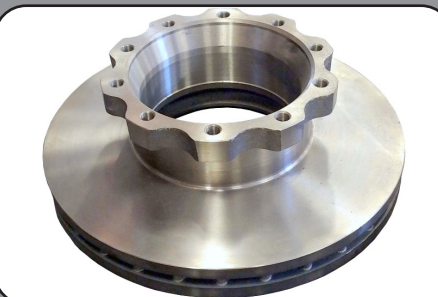
57714

Front

Alternate #76621G
New Flyer #6347297
Vanhool #N508030038/N508030040

WEBB #55040
Meritor #M44D76621

12 Bolt Hole, 130 mm Rotor
Hat Shaped



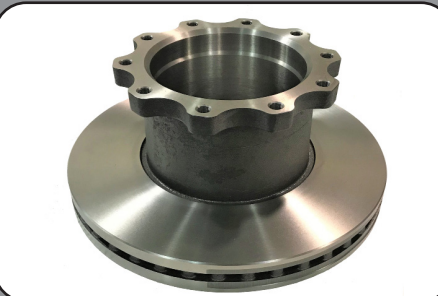
57715

Rear

Alternate #76616G
New Flyer #6359347
MAN 81.50803.3041, 81.50803.0041

WEBB #56020

10 Bolt Hole, 5.32" Rotor
U-Shaped



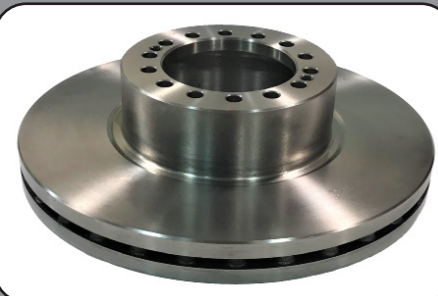
57716

Rear

Altnerate #76604G
Bendix #II 37986
WEBB #56050F

Knorr #K021959
Prevost #611457, 621672

U-Shaped



57717

Front

Alternate #76641
Bendix #802669, Z006407

Prevost #611300
WEBB #55080P

Hat Shaped

KNORR COMPONENTS

ROTORS

Image to Come

57719

Alernate #76603G
Prevost #611456, 611188

Knorr #II37415N
WEBB #56022P

10 Bolt Hole, Rotor
U-Shaped

TOOLS



BW-30MMDBW

Disc Brake Caliper Torque Wrench Extention

12 Point, 30mm Socket



BW-27MMDBW

Disc Brake Caliper Torque Wrench Extention

12 Point, 27mm Socket



BW-24MMDBW

Disc Brake Caliper Torque Wrench Extention

12 Point, 24mm Socket

Image to Come

BT81L001

Tool Kit

BRAKE CHAMBERS



U026734

24/24

Bendix #K026734

Spring Brake Chamber

REMANUFACTURED CALIPERS



LRG663R

Right Side

Vanhool #10992115

Elsa 2 Radial

Image shown

LRG662R

Left Side

Vanhool #10992112

Elsa 2 Radial

Reverse of image shown



LRG723R

Right Side

Vanhool #N50804390

Elsa 2 Axial

Image shown

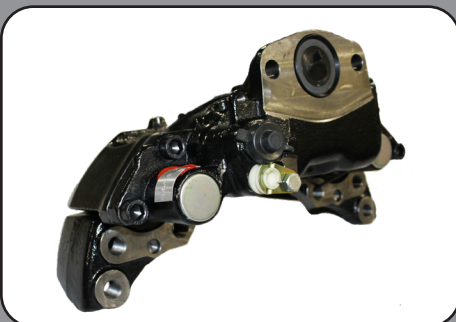
LRG722R

Left Side

Vanhool #N50804389

Elsa 2 Axial

Reverse of image shown



3028

Right Side

EX225H202

Image shown

3027

Left Side

EX225H201

Reverse of image shown

Image to Come

LRG###R

Left Side

EX225H205
8 Bolt Carrier

Image shown

LRG###R

Right Side

EX225H206
8 Bolt Carrier

Reverse of image shown

CARRIERS

Image to Come

TBA

Elsa 2

MERITOR COMPONENTS

CARRIERS



TBA

Casting #683252006
Meritor #3815G1593

EX225H2 Axial

Image to Come

TBA

IHC
Meritor #3215W1791

EX225H205/EX225H206

8 Bolt Carrier

Image to Come

3030

Meritor #3215G1593
MCI #04-01-1116

EX225H301

6 Bolt Carrier

3029

Meritor #3215G1593
MCI #04-01-1115

EX225H301

6 Bolt Carrier

KITS



20229

Meritor #MCK1139, 85107913, 81508026024

Caliper Dust Cover
Meritor Elsa 2, EX225

Also 20365: Pack of 10




20238

Meritor #MCK1298

Caliper Repair Kit
Meritor EX225 H2

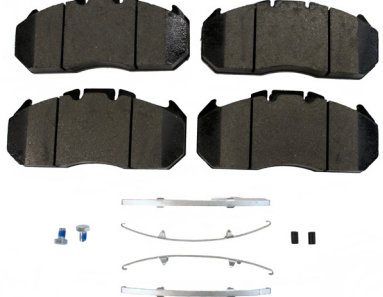
MERITOR COMPONENTS

KITS

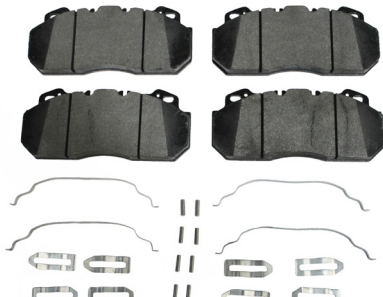
	<p>20341 Meritor #SJ 4053</p> <p>Caliper Boot Meritor Elsa 2, EX225</p>
---	--

BRAKE PADS

MERITOR COMPONENTS

	<p>BW1310ZNRs Meritor Elsa 2</p> <p>Coach/Transit Pads</p> <p><i>Includes hardware kit</i></p>
---	---

	<p>BW1311ZNRs MCI #04-01-1113</p> <p>Meritor EX225H2/EX225L2</p> <p>Coach/Transit Pads</p> <p><i>Includes hardware kit</i></p>
--	---

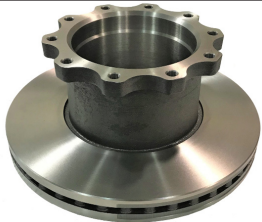
	<p>BW1312ZNRs MCI #04-01-1019</p> <p>Meritor D-Lisa</p> <p>Coach/Transit PaD</p> <p><i>Includes hardware kit</i></p>
---	---


<p>Image to Come</p>	<p>BW1370ZNRs Meritor EX225L2</p> <p>Coach/Transit Pads</p> <p><i>Includes hardware kit</i></p>
-----------------------------	--

BRAKE PADS

	<p>26-1708-02HK Mack #22179301 Volvo #21024702 WVA #29174 Meritor Elsa 225-3 Coach/Transit Pads <i>Includes hardware kit</i></p>
---	---

ROTORS

	<p>57716 Altnerate #76604G Bendix #II 37986 WEBB #56050F Knorr #K021959 Prevost #611457, 621672 U-Shaped See also: Page 18</p>	Rear
---	---	-------------

	<p>57717 Alternate #76641 Bendix #802669, Z006407 Prevost #611300 WEBB #55080P Hat Shaped See also: Page 18</p>	Front
--	--	--------------

MERITOR COMPONENTS

REMANUFACTURED CALIPERS



1005 Left Side

ATL #BWR113887

Haldex #790-92799

DB22/DB22LT
ADB22X 0° Trailer Caliper

Retro fit

Image shown

1006 Right Side

Alternate #BWR113888

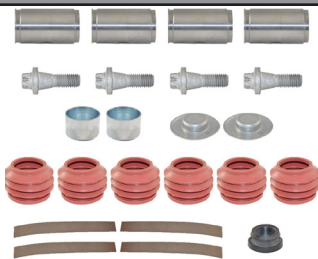
Haldex #

DB22/DB22LT
ADB22X 0° Trailer Caliper

Retro fit

Reverse of image shown

KITS



60103

Haldex #91012

Guide Pin Kit
Haldex DB22 Modul X



60125

Haldex #95397

Guide Pin Kit
Haldex DB22LT



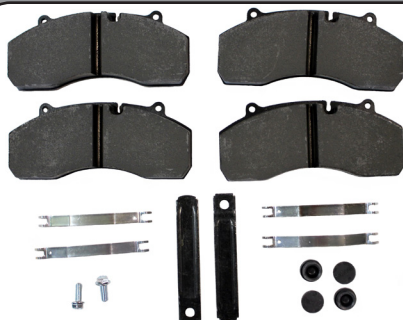
60141

Haldex #

Guide Pin Kit
Haldex DB22LT

HALDEX COMPONENTS

BRAKE PADS



BW1583ZNRS

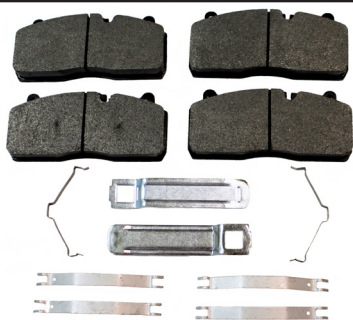
Haldex #790-22208, 790-22031

Haldex DB22 Modul X

Truck and Trailer Pads

Includes hardware kit

BRAKE PADS



26-1583-02HK

Hallex #790-22040, 790-22040
S-30560-8

Hallex DB22LT Modul T

Truck and Trailer Pads

Includes hardware kit, with 60122 Retainer

ROTORS



57710

Alternate #76810G
Hallex #R6206M, R6225M

Hendrickson #S-34172
Meritor #M44D6206

430mm
U-Shaped

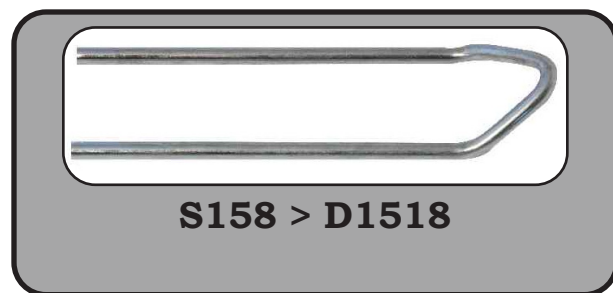
Includes 5/8" UNC bolt hardware

ADB Caliper Easy I.D.

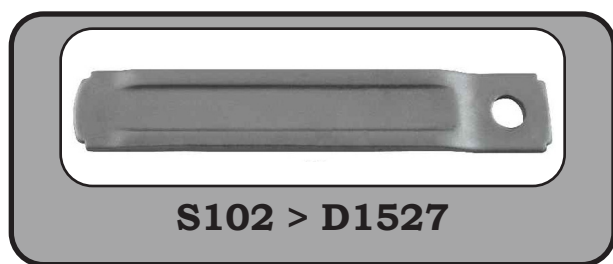
KNORR



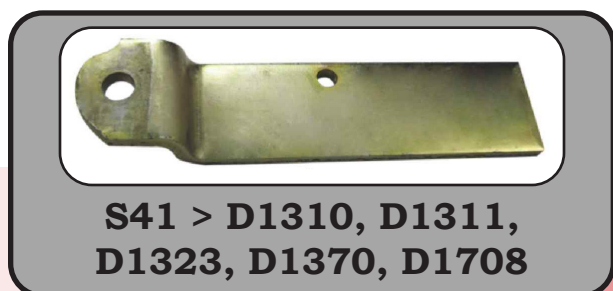
WABCO



HALDEX



MERITOR



*S154OSL is 6mm longer than OEM

ADB TOP SELLING COMPONENTS

01/01/2022

AIR DISC PADS

FMSI/WVA #'S	COMPUTER#	ECO #	OEM CALIPER	CALIPER FAMILY	WHERE USED	mm wide	Rank
D1203	BW1203Z	BW1203F	KNORR BREMSE	SB/SN7	TRANSIT/COACH/EMERGENCY	250	C
D1311	BW1311Z	BW1311F	MERITOR	EX225H	TRANSIT/COACH/EMERGENCY	250	C
D1312	BW1312Z		MERITOR	D-LISA	TRANSIT/COACH/EMERGENCY	250	W
D1369	BW1369Z	BW139F	BENDIX/KNORR	ADB22/SK7	ON HIGHWAY TRACTOR/TRAILER	210	A
D1370	BW1370Z		MERITOR	EX225L	ON HIGHWAY TRACTOR/TRAILER	215	C
D1438	BW1438Z	BW1438F	WABCO	PAN19	TRAILER	210	D
D1441	BW1441Z		HALDEX/	ESD225	TRACTOR/MOTORHOME	250	W
D1518	BW1518Z	BW1518F	WABCO	PAN17	TRAILER	175	C
D1527	BW1527Z		HALDEX	DB22	ON HIGHWAY TRACTOR/TRAILER	250	W
D1583	BW1583Z	BW1583F	HALDEX	DB22LT	TRAILER	210	B
D1708 (WVA29174)	BW29174		MERITOR	ELSA225-3	VOLVO	250	W
D1777	BW1777Z	BW1777F	WABCO	PAN22	TRAILER	210	B
D2061	BW2061Z	BW2061F	WABCO	MAXXUS/MAXX22T	TRACTOR/TRAILER	210	B
WVA29173	BW29173		MERITOR	EX225L VOLVO/MACK	VOLVO/MACK	210	NEW
WVA29318	BW29318		SAF/KNORR	SB2220K0	SAF TRAILER	215	NEW

ALL PADS INCLUDE HARDWARE

PADS BOXED IN SETS

ROTORS

BW CATALOGUE #	COMPUTER#	PAD SET USED	OEM CALIPER	CALIPER FAMILY	WHERE USED	O.D.	RANK
57701	802569G	BW1369Z	BENDIX	ADB22	TRACTOR/TRAILER	430mm	A
57702	802081G	BW1369Z	BENDIX	ADB22	TRACTOR	430mm	C
57703	802082G	BW1369Z	BENDIX/SAF	ADB22/ST7	TRACTOR/TRAILER	430mm	A
57704	56642G	BW1311Z	MERITOR	EX225H	TRANSIT/COACH/EMERGENCY	430mm	D
57705	76620G	BW1369Z	CONMET	ADB22	TRACTOR	430mm	B
57706	75180G	BW1518Z	WABCO	PAN17	TRAILER	375mm	C
57708	76613G	BW1777Z	IMT	PAN22	TRAILER	430mm	B
57709	76471G	BW2061Z	HENDRICKSON	PAN22	TRAILER	430mm	B
57710	76810G	BW1777Z	HENDRICKSON	PAN22	TRAILER	430mm	B
57711	51830036G	WVA29318	SAF	SB2220K0	TRAILER	430mm	C
57732	76801G	BW1369Z	CONMET	ADB22	TRAILER	430mm	NEW
57733	76619G	BW1777Z	RIDEWELL	PAN22	TRAILER	430mm	W

ROTORS ARE GEOMET COATED AND INCLUDE MOUNTING HARDWARE

ROTORS GREY CAST IRON G3500b

CALIPERS

BW CATALOGUE #	COMPUTER#	PAD SET USED	OEM CALIPER	CALIPER FAMILY	WHERE USED		RANK
1003	BWRK012341	BW1369Z	KNORR BREMSE	SK7	SAF AXLE		C
1004	BWRK102342	BW1369Z	KNORR BREMSE	SK7	SAF AXLE		C
1005	BWR113888	BW1369Z	BENDIX	ADB22	TRAILER		A
1006	BWR113887	BW1369Z	BENDIX	ADB22	TRAILER		A
1017	BWR109957	BW1369Z	BENDIX	ADB22	TRACTOR ALL MAKE		A
1018	BWR109958	BW1369Z	BENDIX	ADB22	TRACTOR ALL MAKE		A
1019	BWR109961	BW1369Z	BENDIX	ADB22	TRACTOR FREIGHTLINER		B
1020	BWR109962	BW1369Z	BENDIX	ADB22	TRACTOR FREIGHTLINER		B
1021R	BWR165794	BW1369Z	BENDIX	ADB22LT	TRAILER	R&R	C
1022R	BWR165795	BW1369Z	BENDIX	ADB22LT	TRAILER	R&R	C
1023R	BWRK069395	WVA29318	SAF	SB2220K0	SAF AXLE use WVA29318 PADS	R&R	W
1024R	BWRK069396	WVA29318	SAF	SB2220K0	SAF AXLE use WVA29318 PADS	R&R	W
3001	40175090	BW1518Z	WABCO	PAN17	TRAILER		C
3002	40175091	BW1518Z	WABCO	PAN17	TRAILER		C
3019	402250500	BW1777Z	WABCO	PAN22	IMT/AXN/RIDEWELL		B
3020	402250510	BW1777Z	WABCO	PAN22	IMT/AXN/RIDEWELL		B
3021	402250800	BW1777Z	WABCO	PAN22	HENDRICKSON AXLE		A
3022	402250810	BW1777Z	WABCO	PAN22	HENDRICKSON AXLE		A
3023R	403220650	BW2061Z	WABCO	MAXXUS	TRACTOR	R&R	D
3024R	403220660	BW2061Z	WABCO	MAXXUS	TRACTOR	R&R	D
3025	402220070	BW2061Z	WABCO	MAXX22T	TRAILER		B
3026	402220080	BW2061Z	WABCO	MAXX22T	TRAILER		B
2027	EX225H201	BW1311Z	MERITOR	EX225H	TRACTOR /TRANSIT/EMERGENCY		D

CALIPERS

BW CATALOGUE #	COMPUTER#	PAD SET USEI	OEM CALIPER	CALIPER FAMILY	WHERE USED	RANK
2028	EX225H202	BW1311Z	MERITOR	EX225H	TRACTOR /TRANSIT/EMERGENCY	D
2031	EX225H206	BW1311Z	MERITOR	EX225H	TRACTOR	R&R W
2032	EX225H205	BW1311Z	MERITOR	EX225H	TRACTOR	R&R W

BOLD ITEMS ARE A OR B POPULARITY

HALDEX DB22 AND DB22LT CAN BE REPLACED WITH ADB22 ON HENDRICKSON AXLES

HALDEX CORES HAVE \$0.00 VALUE.

R&R REBUILD AND RETURN DUE TO LACK OF CARRIER FOR THIS PART NUMBER

RED ITEMS ARE NOT IN CURRENT CATALOG WILL BE INCLUDED IN THE NEXT EDITION